

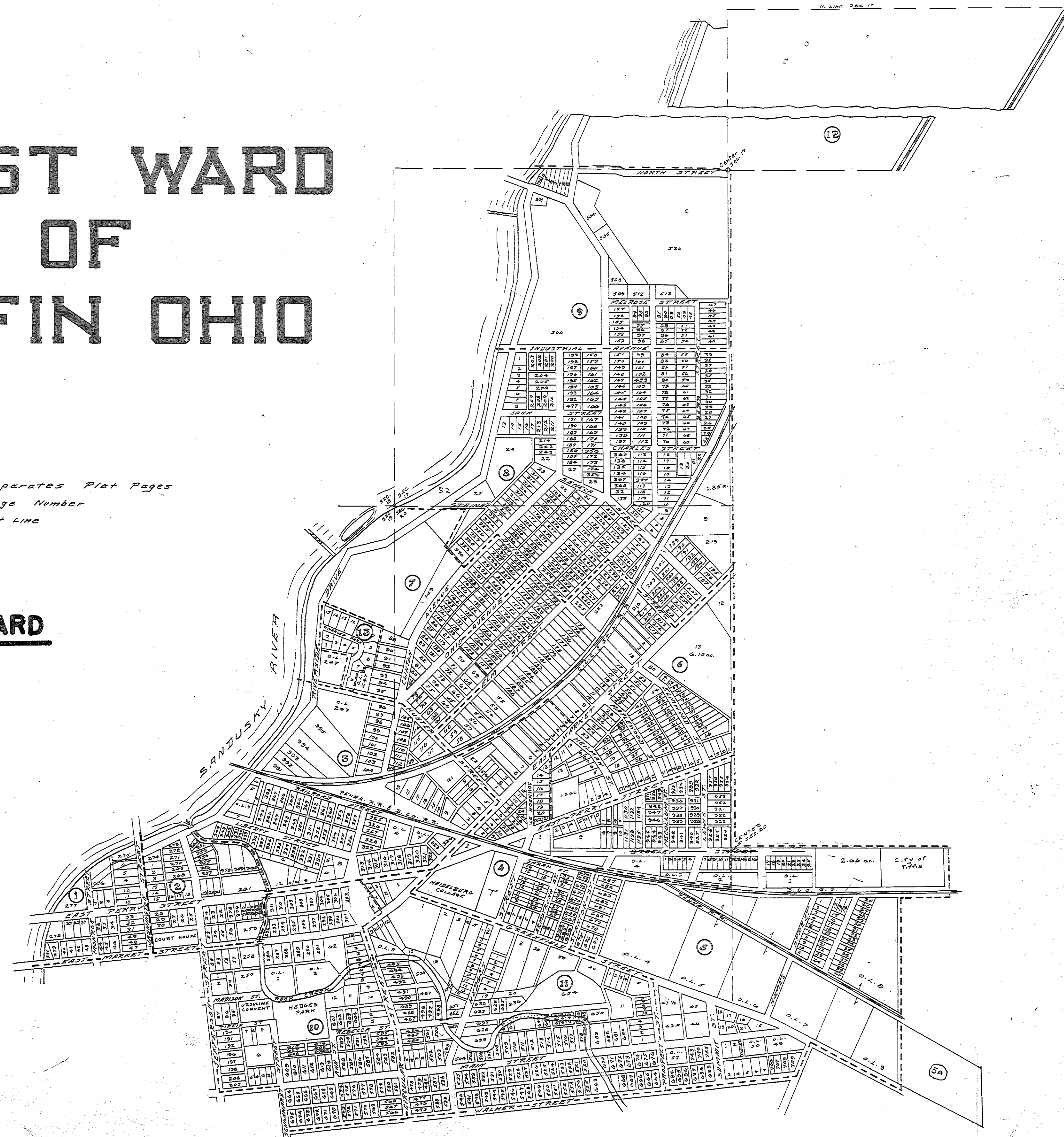
FIRST WARD OF TIFFIN OHIO

SUB-DIVISIONS	PAGE NO.
ARMSTRONG'S ADD.	4
BENNER'S SUB-DIV. By Appraisers	4
BUNN'S J.F. SUB-DIV.	11
BREWER ET AL BY LAND APPRAISERS	11
BALDWIN'S SUB-DIV.	4,5
BRICKNERS ADDN.	9
BLAUSINS ET AL By Land Appr's.	11
CLINTON HEIGHTS	6,7
DENZER'S SUB-DIV.	4
DIEMERS SUB-DIV. By Appr's. 1880	10
FLEMING ET AL BY APPR'S. 1880	10
FLECK'S SUB-DIV.	5
FROST'S ADD.	4,5
FIEGE'S ADD By Appr's. 1890	10
FIEGE'S GEO. ADD.	10
GILBERT ET AL BY APPR'S. 1880	10
GREENFIELD HEIGHTS	5
GWYNN'S ADD.	5
HEMING'S RESURVEY	2,10
HEDGE'S ESTATE	5
HEDGE'S SECOND ADD.	3,10,11
HUFFMAN ET AL BY APPR'S. 1880	4
HEILMAN BROS. REPLAT	4,6
HEILMAN'S J. ADDITION'S I & II	10
HUNTER'S ADD. 1880	3
HUNTER'S ADD.	4
HUNTER C. BY LAND APPR'S.	3,7
HARTER & SLOWMAN ALTERATION	11
KUHN'S M.P. ADD	4
LEWIS, MCGULLOM & SMYER SUB-DIV.	4
LEISTER'S SUB-DIV	11
MYERS, STALTER & BUNN ADD.	3,6,7
MUELLER'S C. REPLAT 1880	3,7
MILL RACE SUB-DIV.	3,11
PARK ALLOTMENT	6
RIVERLEA PARK	13
RIVERVIEW HEIGHTS	6,8,9
RIVERVIEW REPLAT	8,9
RIVERVIEW ADDN.	6,7,8,9
REPLAT 1880	3
REPLAT 1890	10,11
RENNINGER J. ALLOTMENT	6
RUST'S ADDITION	3
SPORN ET AL BY LAND APPR'S.	6,8
SUB-DIV. BY LAND APPR'S. 1890	10
SHELDON'S ADD.	2
STANLEY'S REPLAT	11
SULLIVAN'S REPLAT	2
SHEELEY'S REPLAT	11
SENEY'S ADD.	6
WALKER'S ADD.	5,10,11
WILLARD'S SUB-DIV.	4
EAST POINTE COURT	6A
SUB-DIV. OF LOTS 481, 482, 483 ROBERT WALKER'S ADD.	11
ParkView Condos	5A
KENNAT ESTATES	5A

----- Separates Plat Pages
 (9) Page Number
 Lot Line

2 WARD

4 WARD



GREENBRIER SUBDIVISION
5A